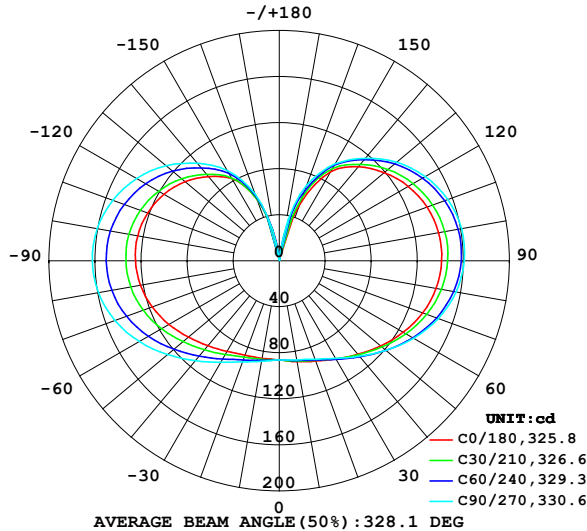


LUMINAIRE PHOTOMETRIC TEST REPORT

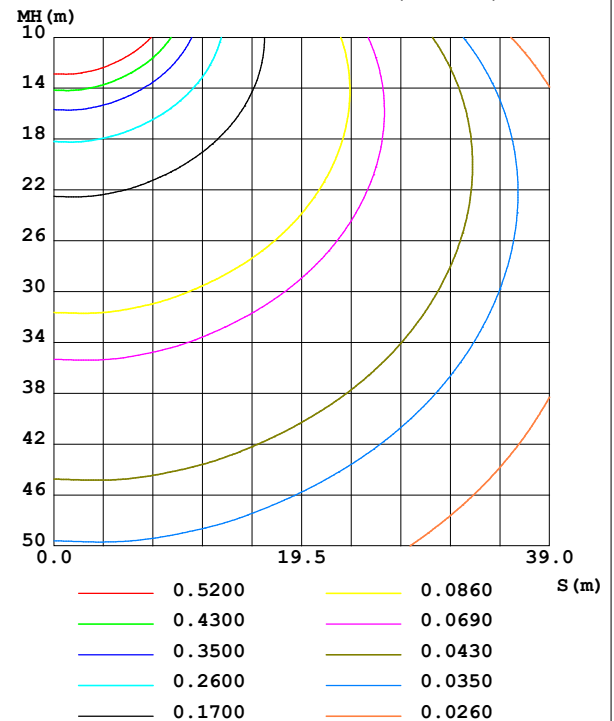
NAME: 99LED835WW	TYPE:	WEIGHT: 1
SPEC.:	DIM.: F60	SERIAL No.: 0
MFR.: Elmark Industries JSC	SUR.: round	Shielding Angle:

DATA OF LAMP		PHOTOMETRIC DATA			
MODEL	99LED835WW	Imax(cd)	162.9	S/MH(C0/180)	1.69
NOMINAL POWER(W)	11	LOR(%)	122.5	S/MH(C90/270)	1.97
RATED VOLTAGE(V)	230	TOTAL FLUX(lm)	1543.1	η UP,DN(C0-180)	30.7,30.6
NOMINAL FLUX(lm)	1260	CIE CLASS	DIFFUSE	η UP,DN(C180-360)	30.1,31.1
LAMPS INSIDE	1	η up (%)	60.8	CIBSE SHR NOM	2.00
TEST VOLTAGE(V)	230	η down (%)	61.7	CIBSE SHR MAX	2.00

LUMINOUS INTENSITY DISTRIBUTION DIAGRAM



C0 PLANE ISOLUX DIAGRAM (UNIT:lx)



C Range: 0 - 360DEG
 C Interval: 10.0DEG
 Test Speed: HIGH
 Temperature: 25.3°C
 Operators:
 Test Date: 20 October 2022

γ Range: 0 - 180DEG
 γ Interval: 2.5DEG
 Test System: EVERFINE GO-2000A_V1 SYSTEM V2.00.456
 Humidity: 65.0%
 Test Distance: 6.265m [K=1.0000]
 Remarks:

ZONAL FLUX DIAGRAM

ZONAL FLUX DIAGRAM:

γ	C0	C45	C90	C135	C180	C225	C270	C315	γ	Φ zone	Φ total	%lum,lamp
10	89.06	88.36	87.56	86.56	86.14	87.43	88.68	89.12	0- 10	8.319	8.319	0.54,0.66
20	92.77	92.05	91.09	88.60	87.47	90.42	93.57	93.75	10- 20	25.38	33.70	2.18,2.67
30	98.55	98.61	97.98	93.32	90.96	96.30	102.0	101.3	20- 30	43.60	77.29	5.01,6.13
40	106.2	107.9	108.4	100.9	96.45	104.6	113.4	111.3	30- 40	63.95	141.2	9.15,11.2
50	115.1	118.9	121.0	110.4	103.2	114.4	126.8	122.8	40- 50	86.27	227.5	14.7,18.1
60	124.4	130.6	134.7	120.9	110.7	124.6	140.5	134.5	50- 60	109.7	337.2	21.9,26.8
70	132.6	141.0	147.0	130.6	117.5	133.4	151.9	144.3	60- 70	131.7	468.9	30.4,37.2
80	138.4	148.5	156.0	137.8	122.5	139.2	159.5	150.9	70- 80	149.1	618.1	40.1,49.1
90	141.1	152.4	160.7	141.8	125.0	141.5	162.4	153.6	80- 90	159.3	777.4	50.4,61.7
100	140.7	152.1	160.8	142.1	124.9	140.5	160.6	152.3	90-100	160.8	938.2	60.8,74.5
110	136.6	147.5	155.8	138.3	121.7	135.5	154.0	146.7	100-110	153.1	1091	70.7,86.6
120	129.4	139.1	146.5	130.8	115.7	127.2	143.1	137.4	110-120	137.1	1228	79.6,97.5
130	119.3	127.4	133.3	120.0	107.0	115.8	128.5	124.6	120-130	115.0	1343	87.1,107
140	106.7	112.2	116.3	106.0	95.60	101.5	110.6	108.6	130-140	89.02	1432	92.8,114
150	89.23	93.93	97.19	90.12	82.44	85.44	90.71	90.32	140-150	62.41	1495	96.9,119
160	52.06	59.98	69.76	64.43	57.34	57.89	61.51	59.99	150-160	35.83	1531	99.2,121
170	9.344	14.37	22.78	21.57	17.45	16.50	16.16	13.05	160-170	11.78	1542	100,122
180	1.142	1.147	1.143	1.141	1.147	1.147	1.143	1.140	170-180	0.5931	1543	100,122
DEG	LUMINOUS INTENSITY:cd									UNIT:lm		

Conical surface Flux(90deg): 181.48 lm

%lum = 11.8%
%lamp = 14.4%

Conical surface Flux(130deg): 400.51 lm

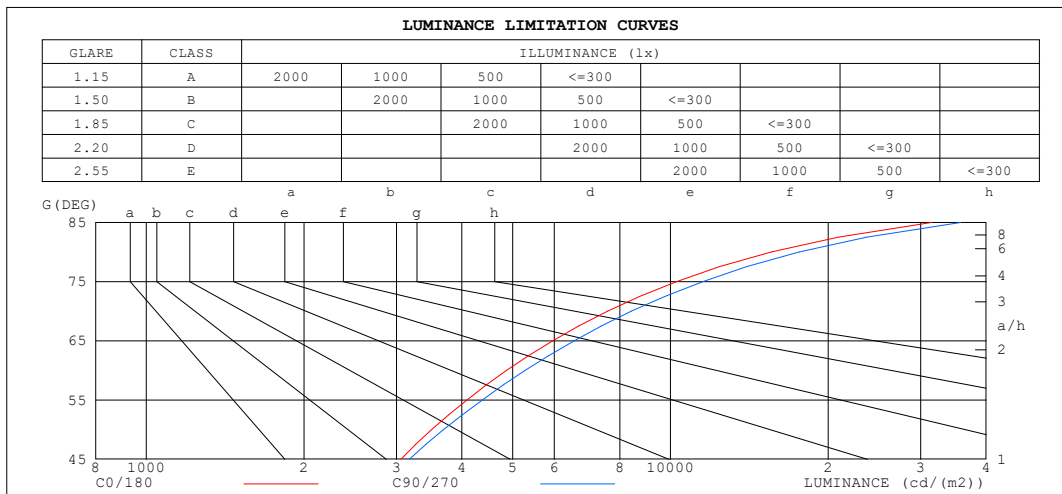
%lum = 26.0%
%lamp = 31.8%

C Range: 0 - 360DEG
C Interval: 10.0DEG
Test Speed: HIGH
Temperature:25.3°C
Operators:
Test Date:20 October 2022

γ Range: 0 - 180DEG
 γ Interval: 2.5DEG
Test System:EVERFINE GO-2000A_V1 SYSTEM V2.00.456
Humidity:65.0%
Test Distance:6.265m [K=1.0000]
Remarks:

LUMINANCE LIMITATION CURVES

NAME: 99LED835WW	TYPE:	WEIGHT: 1
SPEC.:	DIM.: F60	SERIAL No.: 0
MFR.: Elmark Industries JSC	SUR.: round	Shielding Angle:



LUMINANCE cd/(m2)		
G (DEG)	C0/180	C90/270
85	31460	35747
80	15590	17613
75	10271	11514
70	7586	8426
65	5960	6549
60	4869	5281
55	4088	4371
50	3504	3691
45	3059	3174

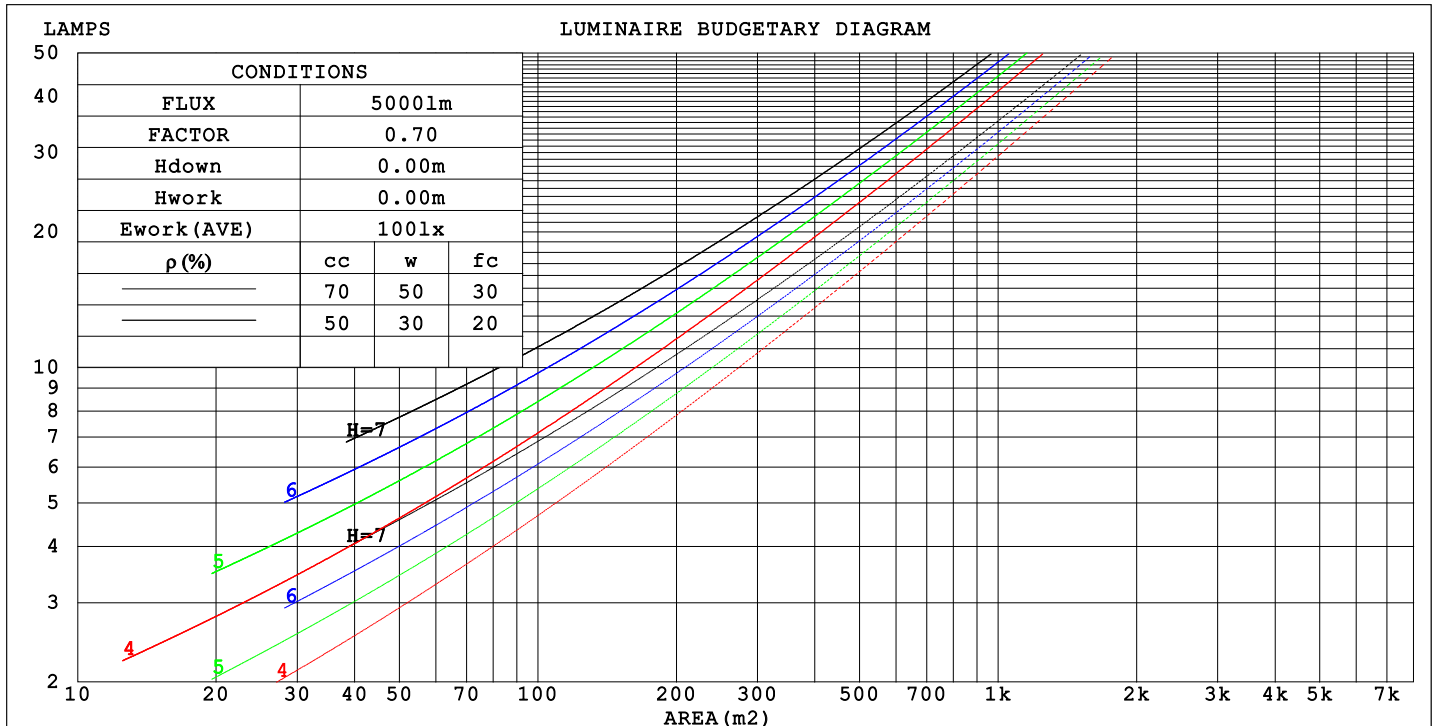
C Range: 0 - 360DEG
C Interval: 10.0DEG
Test Speed: HIGH
Temperature: 25.3°C
Operators:
Test Date: 20 October 2022

γ Range: 0 - 180DEG
γ Interval: 2.5DEG
Test System: EVERFINE GO-2000A_V1 SYSTEM V2.00.456
Humidity: 65.0%
Test Distance: 6.265m [K=1.0000]
Remarks:

CU AND LUMINAIRE BUDGETARY ESTIMATE DIAGRAM

NAME: 99LED835WW	TYPE:	WEIGHT: 1
SPEC.:	DIM.: F60	SERIAL No.: 0
MFR.: Elmark Industries JSC	SUR.: round	Shielding Angle:

pcc	80%			70%			50%			30%			10%			0
pw	50%	30%	10%	50%	30%	10%	50%	30%	10%	50%	30%	10%	50%	30%	10%	0
pfc	20%			20%			20%			20%			20%			0
RCR	RCR:Room Cavity Ratio															



C Range: 0 - 360DEG
C Interval: 10.0DEG
Test Speed: HIGH
Temperature:25.3°C
Operators:
Test Date:20 October 2022

γ Range: 0 - 180DEG
γ Interval: 2.5DEG
Test System:EVERFINE GO-2000A_V1 SYSTEM V2.00.456
Humidity:65.0%
Test Distance:6.265m [K=1.0000]
Remarks:

WEC AND CCEC

NAME: 99LED835WW	TYPE:	WEIGHT: 1
SPEC.:	DIM.: F60	SERIAL No.: 0
MFR.: Elmark Industries JSC	SUR.: round	Shielding Angle:

pcc	80%			70%			50%			30%			10%			0
pw	50%	30%	10%	50%	30%	10%	50%	30%	10%	50%	30%	10%	50%	30%	10%	0
pfc	20%			20%			20%			20%			20%			0
RCR	RCR:Room Cavity Ratio						Wall Exitance Coefficients(WEC)									
0.0																
1.0	.515	.293	.093	.487	.278	.088	.436	.250	.080	.389	.224	.072	.346	.200	.065	
2.0	.426	.234	.072	.402	.221	.068	.355	.197	.061	.311	.175	.055	.271	.154	.048	
3.0	.370	.197	.059	.348	.186	.056	.305	.165	.050	.265	.145	.045	.228	.126	.039	
4.0	.329	.171	.050	.308	.161	.048	.269	.142	.043	.232	.125	.038	.198	.108	.033	
5.0	.296	.151	.044	.277	.142	.041	.241	.125	.037	.207	.109	.032	.176	.094	.028	
6.0	.269	.135	.039	.252	.127	.037	.218	.112	.033	.187	.097	.029	.158	.083	.025	
7.0	.247	.122	.035	.231	.115	.033	.200	.101	.029	.171	.088	.026	.144	.075	.022	
8.0	.228	.112	.031	.213	.105	.030	.184	.092	.026	.158	.080	.023	.132	.068	.020	
9.0	.212	.103	.029	.198	.096	.027	.171	.085	.024	.146	.073	.021	.122	.062	.018	
10.0	.198	.095	.026	.185	.089	.025	.160	.078	.022	.136	.068	.019	.114	.057	.016	

pcc	80%			70%			50%			30%			10%			0
pw	50%	30%	10%	50%	30%	10%	50%	30%	10%	50%	30%	10%	50%	30%	10%	0
pfc	20%			20%			20%			20%			20%			0
RCR	RCR:Room Cavity Ratio						Ceiling Cavity Exitance Coefficients (CCEC)									
0.0	.696	.696	.696	.595	.595	.595	.406	.406	.406	.233	.233	.233	.075	.075	.075	
1.0	.697	.657	.621	.596	.564	.534	.408	.388	.369	.235	.224	.215	.075	.072	.069	
2.0	.690	.631	.582	.591	.543	.503	.405	.376	.351	.234	.219	.206	.075	.071	.067	
3.0	.682	.613	.558	.584	.529	.484	.401	.367	.339	.232	.214	.200	.074	.070	.065	
4.0	.672	.599	.542	.577	.517	.471	.397	.361	.332	.230	.211	.196	.074	.069	.065	
5.0	.663	.588	.532	.570	.508	.463	.392	.355	.327	.227	.209	.194	.073	.068	.064	
6.0	.654	.579	.524	.563	.501	.457	.388	.351	.323	.225	.206	.192	.073	.067	.063	
7.0	.646	.571	.519	.556	.495	.452	.384	.347	.320	.223	.205	.191	.072	.067	.063	
8.0	.638	.565	.515	.549	.490	.449	.380	.344	.318	.221	.203	.190	.072	.067	.063	
9.0	.631	.560	.512	.543	.486	.446	.376	.341	.317	.219	.202	.189	.071	.066	.063	
10.0	.624	.555	.509	.538	.482	.444	.373	.339	.316	.218	.200	.188	.071	.066	.062	

C Range: 0 - 360DEG
C Interval: 10.0DEG
Test Speed: HIGH
Temperature:25.3°C
Operators:
Test Date:20 October 2022

γ Range: 0 - 180DEG
γ Interval: 2.5DEG
Test System:EVERFINE GO-2000A_V1 SYSTEM V2.00.456
Humidity:65.0%
Test Distance:6.265m [K=1.0000]
Remarks:

UGR(Unified Glare Rating) Table

NAME: 99LED835WW					TYPE:			WEIGHT: 1		
SPEC.:					DIM.: F60			SERIAL No.: 0		
MFR.: Elmark Industries JSC					SUR.: round			Shielding Angle:		
ceiling/cavity	0.7	0.7	0.5	0.5	0.3	0.7	0.7	0.5	0.5	0.3
walls	0.5	0.3	0.5	0.3	0.3	0.5	0.3	0.5	0.3	0.3
working plane	0.2	0.2	0.2	0.2	0.2	0.2	0.2	0.2	0.2	0.2
Room dimensions	Viewed crosswise					Viewed endwise				
x = 2H y = 2H	13.8	14.9	14.6	15.8	16.9	14.3	15.4	15.1	16.2	17.4
3H	17.2	18.2	18.1	19.2	20.3	17.9	18.9	18.8	19.8	21.0
4H	19.2	20.1	20.1	21.1	22.3	19.9	20.9	20.8	21.8	23.0
6H	21.4	22.3	22.3	23.2	24.4	22.1	23.0	23.1	24.0	25.2
8H	22.6	23.4	23.5	24.4	25.6	23.4	24.2	24.3	25.2	26.4
12H	23.9	24.8	24.9	25.7	26.9	24.8	25.6	25.7	26.5	27.8
4H 2H	15.0	15.9	15.9	16.8	18.0	15.3	16.2	16.2	17.2	18.4
3H	18.5	19.3	19.4	20.3	21.5	19.0	19.8	19.9	20.8	22.0
4H	20.6	21.3	21.5	22.3	23.5	21.2	21.9	22.1	22.9	24.2
6H	22.8	23.5	23.8	24.5	25.8	23.5	24.2	24.5	25.2	26.5
8H	24.1	24.7	25.1	25.7	27.0	24.9	25.5	25.8	26.5	27.8
12H	25.5	26.1	26.5	27.1	28.4	26.4	26.9	27.3	27.9	29.3
8H 4H	21.4	22.0	22.4	23.0	24.3	21.9	22.5	22.8	23.5	24.8
6H	23.9	24.5	24.9	25.5	26.8	24.5	25.1	25.5	26.1	27.4
8H	25.4	25.8	26.4	26.9	28.2	26.0	26.5	27.0	27.5	28.9
12H	27.0	27.4	28.0	28.4	29.8	27.7	28.2	28.7	29.2	30.5
12H 4H	21.7	22.3	22.6	23.3	24.6	22.1	22.6	23.0	23.6	25.0
6H	24.3	24.8	25.3	25.8	27.1	24.8	25.3	25.8	26.3	27.7
8H	25.8	26.3	26.9	27.3	28.7	26.4	26.9	27.5	27.9	29.2
Variations with the observer position at spacings(CIE Pub.117):										
S = 1.0H	+ 0.1 / - 0.1					+ 0.1 / - 0.1				
1.5H	+ 0.2 / - 0.3					+ 0.2 / - 0.3				
2.0H	+ 0.3 / - 0.4					+ 0.3 / - 0.4				

CIE Pub.117, 1260 lm Total Lamp Luminous Flux Correct (8log(F/F0) = 0.8)
Area: 0.0510446 m2

C Range: 0 - 360DEG
C Interval: 10.0DEG
Test Speed: HIGH
Temperature:25.3°C
Operators:
Test Date:20 October 2022

γ Range: 0 - 180DEG
γ Interval: 2.5DEG
Test System:EVERFINE GO-2000A_V1 SYSTEM V2.00.456
Humidity:65.0%
Test Distance:6.265m [K=1.0000]
Remarks:

UTILIZATION FACTORS TABLE

NAME: 99LED835WW	TYPE:	WEIGHT: 1
SPEC.:	DIM.: F60	SERIAL No.: 0
MFR.: Elmark Industries JSC	SUR.: round	Shielding Angle:

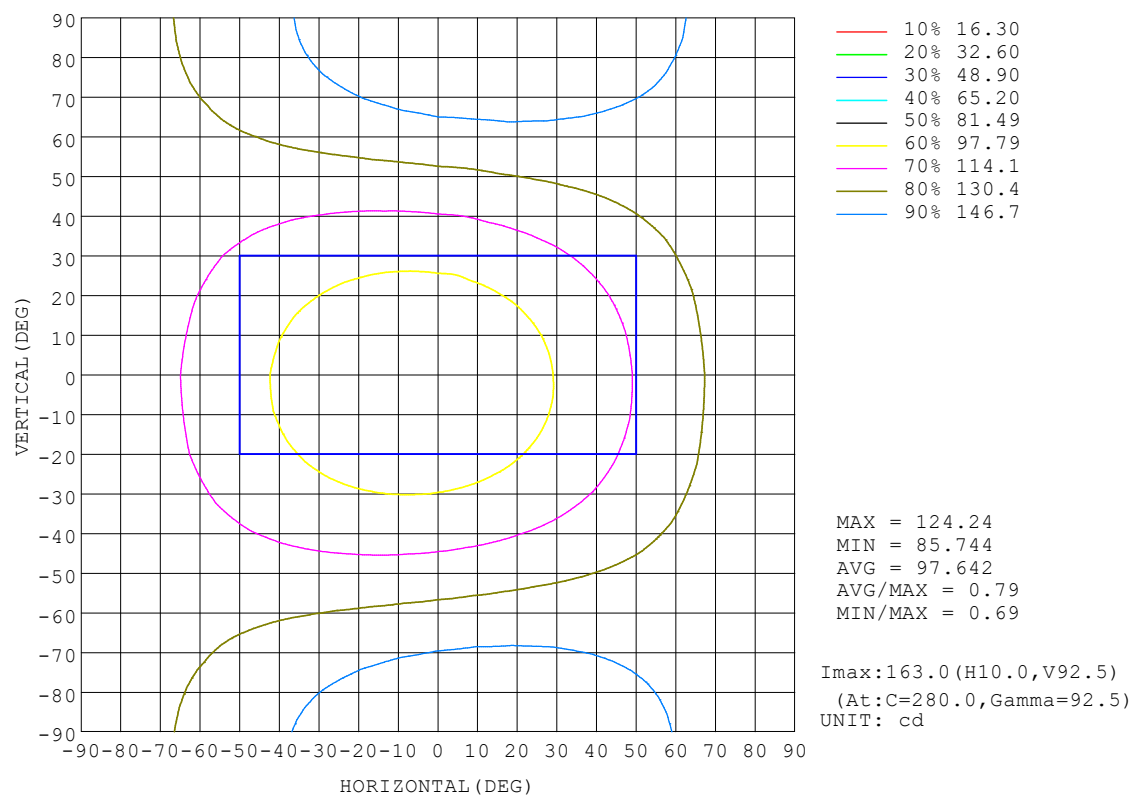
REFLECTANCE										
Ceiling	0.8	0.8	0.8	0.7	0.7	0.7	0.5	0.5	0.5	0
Walls	0.7	0.5	0.3	0.7	0.5	0.3	0.7	0.5	0.3	0
Working plane	0.2	0.2	0.2	0.2	0.2	0.2	0.2	0.2	0.2	0
ROOM INDEX	UTILIZATION FACTORS (PERCENT) $k(RI) \times RCR = 5$									
$k = 0.60$	43	28	19	41	27	18	37	24	17	8
0.80	54	37	26	50	35	25	44	31	23	11
1.00	62	45	34	58	42	32	51	40	29	15
1.25	71	53	41	66	50	39	57	44	35	18
1.50	77	60	48	72	56	45	61	49	40	21
2.00	87	71	59	80	66	55	68	57	48	26
2.50	93	78	66	86	73	62	73	62	54	29
3.00	98	84	73	90	78	68	76	67	59	32
4.00	105	93	83	96	86	77	81	73	66	37
5.00	109	98	89	100	91	83	84	77	71	40
ROOM INDEX	UF(total)									Direct
According to DIN EN 13032-2 2004			Suspended					SHRNOM = 1.25		

C Range: 0 - 360DEG
C Interval: 10.0DEG
Test Speed: HIGH
Temperature:25.3°C
Operators:
Test Date:20 October 2022

γ Range: 0 - 180DEG
γ Interval: 2.5DEG
Test System:EVERFINE GO-2000A_V1 SYSTEM V2.00.456
Humidity:65.0%
Test Distance:6.265m [K=1.0000]
Remarks:

ISOCANDELA DIAGRAM

NAME: 99LED835WW	TYPE:	WEIGHT: 1
SPEC.:	DIM.: F60	SERIAL No.: 0
MFR.: Elmark Industries JSC	SUR.: round	Shielding Angle:

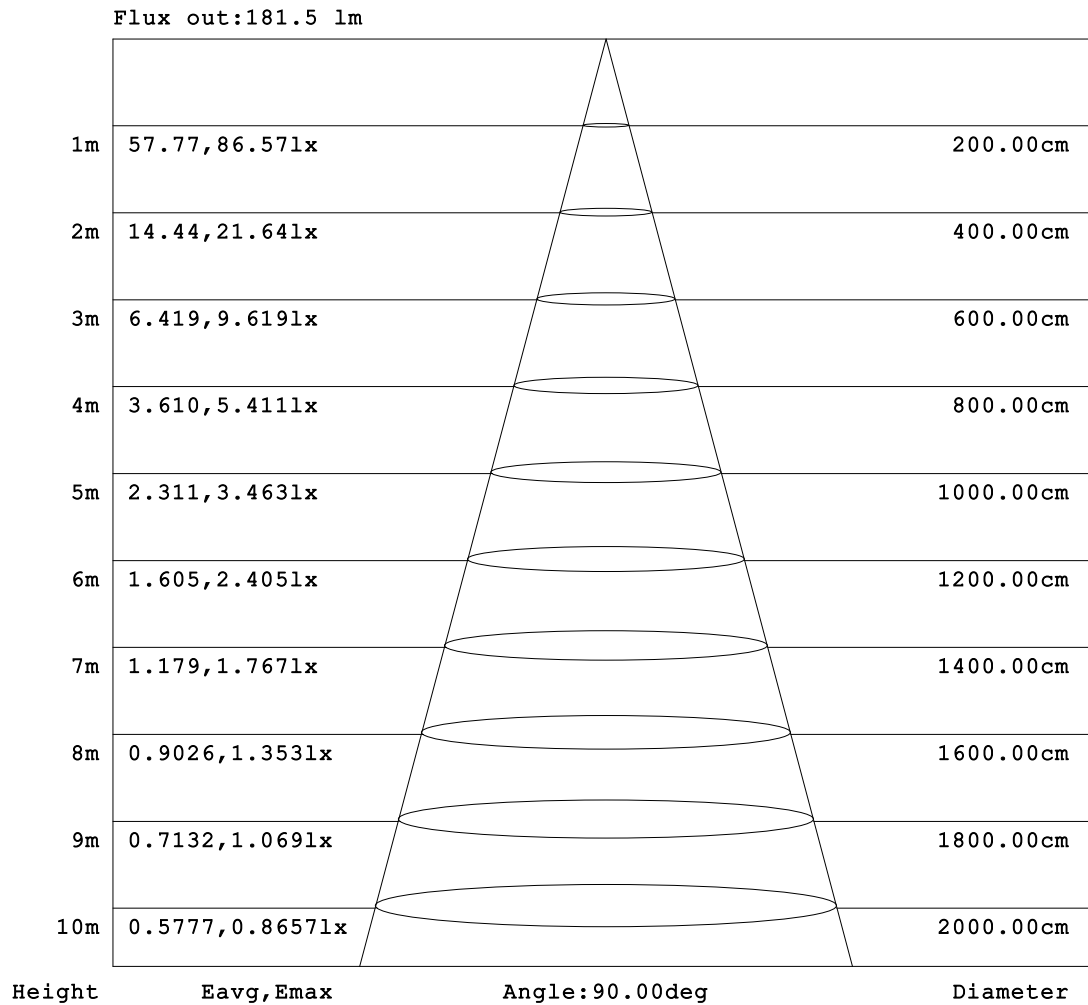


C Range: 0 - 360DEG
 C Interval: 10.0DEG
 Test Speed: HIGH
 Temperature: 25.3°C
 Operators:
 Test Date: 20 October 2022

γ Range: 0 - 180DEG
 γ Interval: 2.5DEG
 Test System: EVERFINE GO-2000A_V1 SYSTEM V2.00.456
 Humidity: 65.0%
 Test Distance: 6.265m [K=1.0000]
 Remarks:

AAI Figure

NAME: 99LED835WW	TYPE:	WEIGHT: 1
SPEC.:	DIM.: F60	SERIAL No.: 0
MFR.: Elmark Industries JSC	SUR.: round	Shielding Angle:



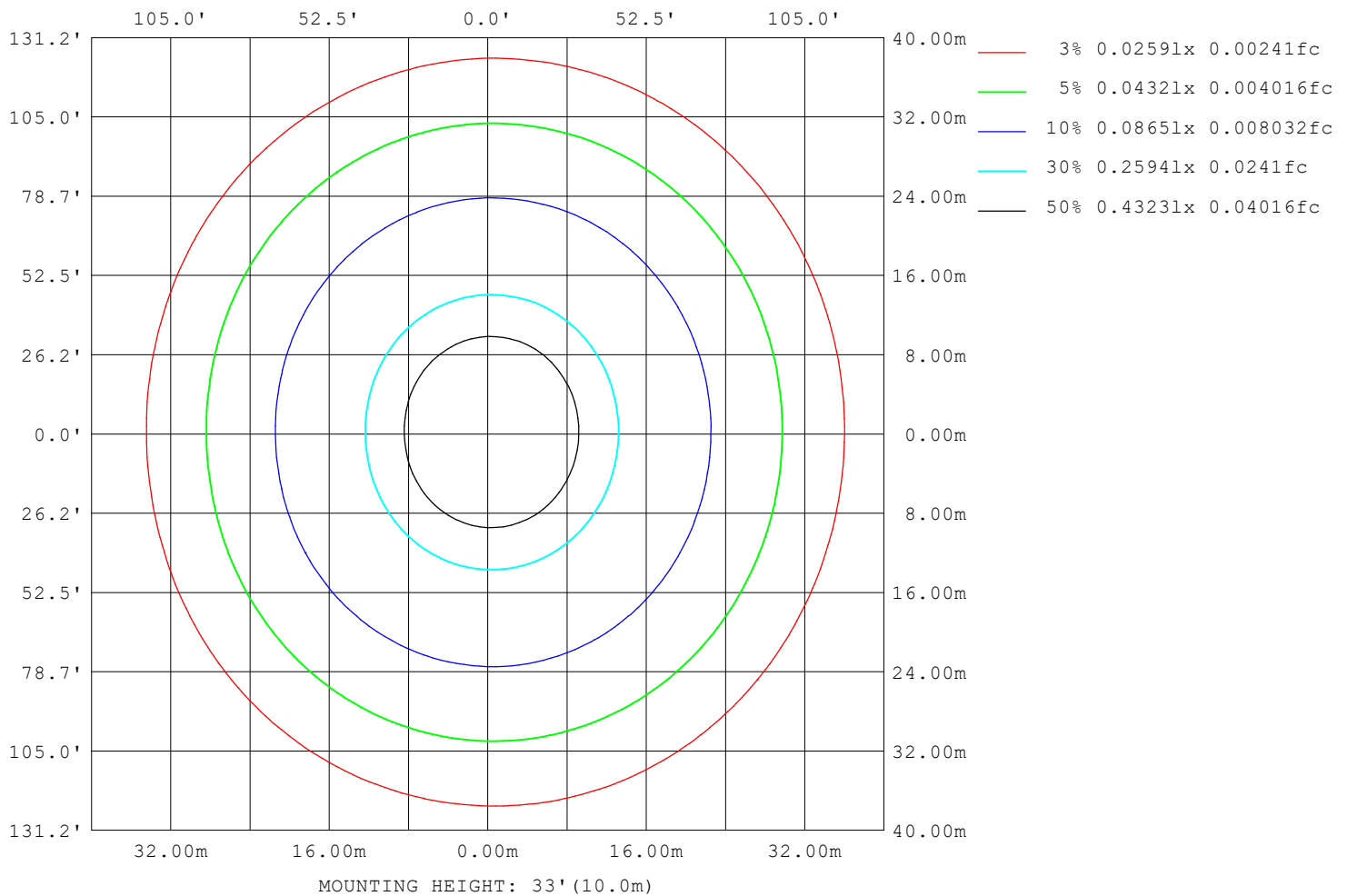
Note: The Curves indicate the illuminated area and the average illumination when the luminaire is at different distance.

C Range: 0 - 360DEG
 C Interval: 10.0DEG
 Test Speed: HIGH
 Temperature: 25.3°C
 Operators:
 Test Date: 20 October 2022

γ Range: 0 - 180DEG
 γ Interval: 2.5DEG
 Test System: EVERFINE GO-2000A_V1 SYSTEM V2.00.456
 Humidity: 65.0%
 Test Distance: 6.265m [K=1.0000]
 Remarks:

ISOLUX DIAGRAM

NAME: 99LED835WW	TYPE:	WEIGHT: 1
SPEC.:	DIM.: F60	SERIAL No.: 0
MFR.: Elmark Industries JSC	SUR.: round	Shielding Angle:



C Range: 0 - 360DEG
C Interval: 10.0DEG
Test Speed: HIGH
Temperature: 25.3°C
Operators:
Test Date: 20 October 2022

γ Range: 0 - 180DEG
γ Interval: 2.5DEG
Test System: EVERFINE GO-2000A_V1 SYSTEM V2.00.456
Humidity: 65.0%
Test Distance: 6.265m [K=1.0000]
Remarks:

LED Avg.L Report

NAME: 99LED835WW	TYPE:	WEIGHT: 1
SPEC.:	DIM.: F60	SERIAL No.: 0
MFR.: Elmark Industries JSC	SUR.: round	Shielding Angle:

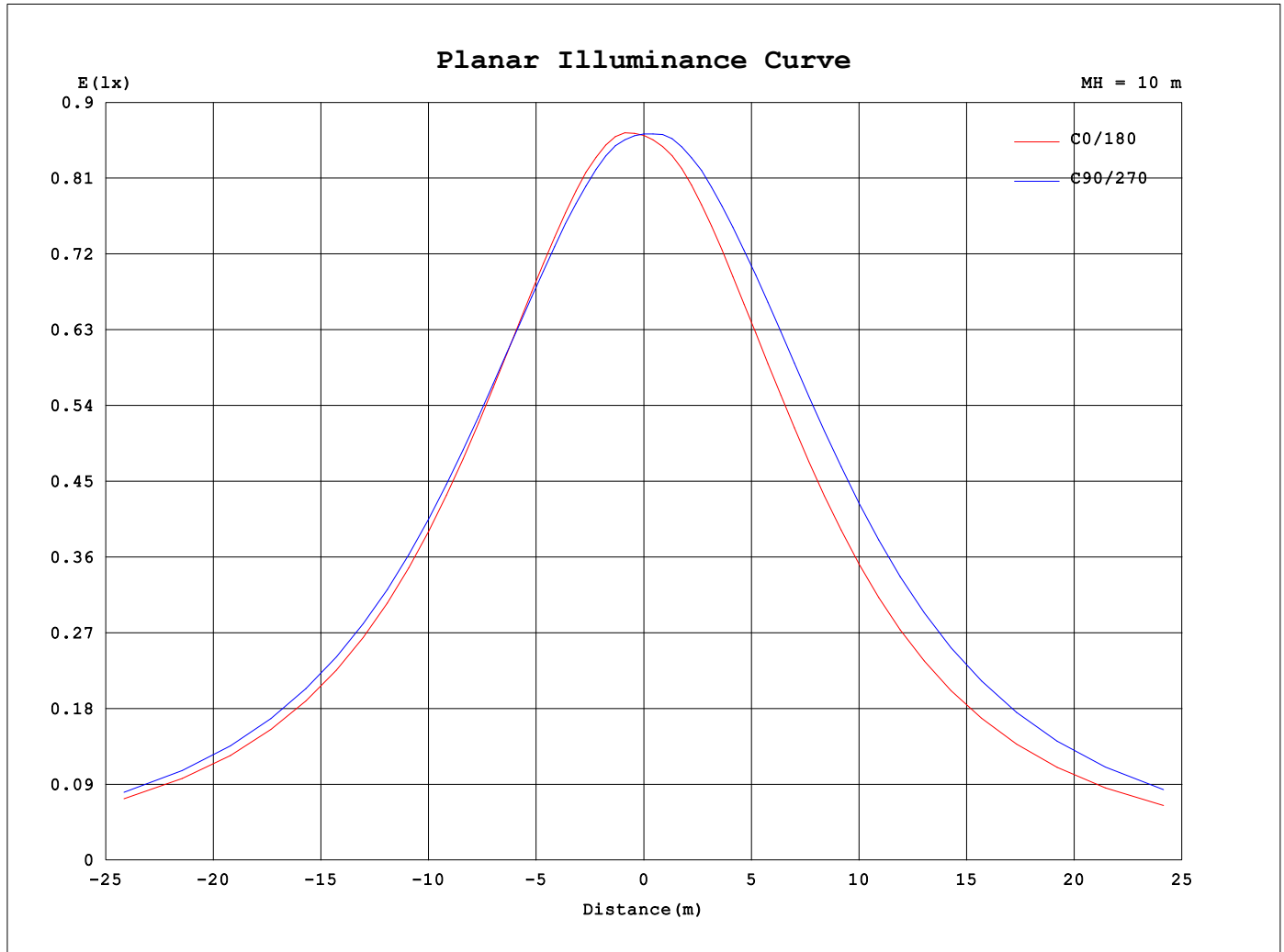
AvgL	cd/m2
L_0~180 (65) av	5632
L_0~180 (75) av	9695
L_0~180 (85) av	29691
L_90~270 (65) av	6671
L_90~270 (75) av	11668
L_90~270 (85) av	36014
L_45 (65) av	6155
L_45 (75) av	10680
L_45 (85) av	32861

Standard: GB/T 29293-2012

C Range: 0 - 360DEG
C Interval: 10.0DEG
Test Speed: HIGH
Temperature:25.3°C
Operators:
Test Date:20 October 2022

γ Range: 0 - 180DEG
γ Interval: 2.5DEG
Test System:EVERFINE GO-2000A_V1 SYSTEM V2.00.456
Humidity:65.0%
Test Distance:6.265m [K=1.0000]
Remarks:

Planar Illuminance Curve



C Range: 0 - 360DEG
 C Interval: 10.0DEG
 Test Speed: HIGH
 Temperature: 25.3°C
 Operators:
 Test Date: 20 October 2022

γ Range: 0 - 180DEG
 γ Interval: 2.5DEG
 Test System: EVERFINE GO-2000A_V1 SYSTEM V2.00.456
 Humidity: 65.0%
 Test Distance: 6.265m [K=1.0000]
 Remarks:

LUMINOUS DISTRIBUTION INTENSITY DATA

NAME: 99LED835WW	TYPE:	WEIGHT: 1
SPEC.:	DIM.: F60	SERIAL No.: 0
MFR.: Elmark Industries JSC	SUR.: round	Shielding Angle:

Table--1

UNIT: cd

C (DEG) γ (DEG)	0	10	20	30	40	50	60	70	80	90	100	110	120	130	140	150	160	170	180
0	86.2	86.2	86.2	86.2	86.2	86.2	86.2	86.2	86.2	86.2	86.2	86.2	86.2	86.2	86.2	86.2	86.2	86.2	86.2
5	87.5	87.5	87.4	87.3	87.2	87.0	86.9	86.8	86.7	86.5	86.4	86.3	86.2	86.1	86.0	85.9	85.8	85.8	85.9
10	89.1	88.9	88.8	88.6	88.4	88.3	88.1	87.9	87.8	87.6	87.4	87.1	86.9	86.7	86.4	86.3	86.1	86.1	86.1
15	90.8	90.6	90.4	90.1	90.0	89.8	89.6	89.4	89.1	88.8	88.5	88.1	87.8	87.4	87.0	86.7	86.5	86.4	86.5
20	92.8	92.5	92.3	92.2	92.1	92.0	91.9	91.7	91.5	91.1	90.7	90.1	89.5	88.9	88.3	87.8	87.5	87.4	87.5
25	95.3	95.0	94.9	94.9	94.9	94.9	94.9	94.7	94.5	94.0	93.4	92.6	91.8	90.9	90.1	89.4	88.9	88.7	88.8
30	98.5	98.2	98.2	98.3	98.5	98.7	98.9	98.8	98.6	98.0	97.3	96.2	95.1	93.9	92.8	91.8	91.2	90.9	91.0
35	102	102	102	102	103	103	104	104	104	103	102	101	99.2	97.6	96.2	94.9	94.0	93.5	93.6
40	106	106	106	107	108	108	109	109	109	108	107	106	104	102	100.0	98.3	97.1	96.4	96.4
45	111	110	111	112	113	114	115	115	115	115	113	111	109	107	104	102	101	99.7	99.7
50	115	115	116	117	118	120	121	122	122	121	120	117	115	112	109	106	104	103	103
55	120	120	120	122	124	126	128	128	129	128	126	124	121	117	114	111	109	107	107
60	124	124	125	127	129	132	134	135	136	135	133	130	127	123	119	115	113	111	111
65	129	129	130	132	135	138	140	141	142	141	139	136	132	128	124	120	117	115	114
70	133	133	134	136	139	143	145	147	148	147	145	142	138	133	128	124	120	118	118
75	136	136	137	140	143	147	150	152	153	152	150	146	142	137	132	127	123	121	120
80	138	139	140	143	147	150	154	156	157	156	154	150	146	141	135	130	126	123	122
85	140	140	142	145	149	153	157	159	160	159	157	153	149	143	137	132	128	125	124
90	141	141	143	146	150	154	158	161	162	161	159	155	150	145	139	133	129	126	125
95	141	142	144	147	151	155	159	161	162	161	159	156	151	145	139	134	129	126	125
100	141	141	143	146	150	154	158	160	161	161	159	155	151	145	139	134	129	126	125
105	139	140	141	144	148	152	156	158	160	159	157	154	149	144	138	132	128	125	124
110	137	137	139	142	146	149	153	155	156	156	154	151	146	141	135	130	126	123	122
115	133	134	136	138	142	146	149	151	152	152	150	147	143	138	132	127	123	120	119
120	129	130	132	134	137	141	144	146	147	146	145	142	138	133	128	124	119	117	116
125	125	125	127	129	132	135	138	140	141	140	139	136	132	128	123	119	115	113	112
130	119	120	121	123	126	129	131	133	134	133	132	129	126	122	118	114	110	108	107
135	113	114	115	117	119	121	123	125	125	124	122	119	115	111	108	105	103	102	
140	107	107	108	109	111	113	115	116	117	116	115	113	111	108	104	101	98.4	96.6	95.6
145	99.2	99.8	101	102	103	105	106	107	107	107	106	105	102	99.8	96.9	94.4	92.0	90.4	89.5
150	89.2	89.8	91.2	92.7	93.6	94.3	96.0	97.0	97.3	97.2	96.4	95.2	93.3	91.3	88.9	86.9	84.8	83.4	82.4
155	73.0	74.6	77.2	78.7	78.9	78.9	81.5	83.9	84.4	84.5	84.0	83.1	81.5	79.9	77.8	76.0	74.0	72.7	71.8
160	52.1	53.5	55.9	58.5	59.2	60.8	65.0	68.0	69.4	69.8	69.2	68.5	67.0	65.5	63.4	61.7	59.7	58.4	57.3
165	28.3	28.4	29.4	32.1	34.7	39.3	44.2	47.3	49.0	49.6	49.0	48.9	47.8	46.6	44.5	42.9	41.2	40.1	39.1
170	9.34	8.61	8.48	9.99	12.6	16.2	18.4	20.8	21.8	22.8	22.9	23.5	22.7	22.2	20.9	19.9	18.6	18.0	17.5
175	1.16	1.14	1.17	1.15	1.19	1.15	1.21	1.18	1.24	1.35	1.42	1.53	1.56	1.61	1.56	1.54	1.46	1.41	1.37
180	1.14	1.14	1.15	1.15	1.15	1.15	1.15	1.14	1.15	1.14	1.15	1.14	1.15	1.14	1.14	1.14	1.14	1.14	1.15

C Range: 0 - 360DEG

C Interval: 10.0DEG

Test Speed: HIGH

Temperature:25.3°C

Operators:

Test Date:20 October 2022

γ Range: 0 - 180DEG

γ Interval: 2.5DEG

Test System:EVERFINE GO-2000A_V1 SYSTEM V2.00.456

Humidity:65.0%

Test Distance:6.265m [K=1.0000]

Remarks:

LUMINOUS DISTRIBUTION INTENSITY DATA

NAME: 99LED835WW	TYPE:	WEIGHT: 1
SPEC.:	DIM.: F60	SERIAL No.: 0
MFR.: Elmark Industries JSC	SUR.: round	Shielding Angle:

Table--2

UNIT: cd

C (DEG) γ (DEG)	190	200	210	220	230	240	250	260	270	280	290	300	310	320	330	340	350		
0	86.2	86.2	86.2	86.2	86.2	86.2	86.2	86.2	86.2	86.2	86.2	86.2	86.2	86.2	86.2	86.2	86.2		
5	86.0	86.1	86.3	86.4	86.6	86.8	86.9	87.1	87.2	87.3	87.3	87.4	87.5	87.5	87.5	87.5	87.5		
10	86.3	86.6	86.9	87.3	87.6	87.9	88.2	88.5	88.7	88.7	89.0	89.0	89.1	89.1	89.1	89.1	89.1		
15	86.8	87.2	87.8	88.3	89.0	89.6	90.1	90.5	90.9	90.8	91.3	91.3	91.3	91.3	91.2	91.1	91.0		
20	87.9	88.4	89.2	90.0	90.9	91.7	92.5	93.1	93.6	93.5	94.0	94.0	93.9	93.6	93.5	93.2	93.0		
25	89.4	90.2	91.2	92.3	93.6	94.7	95.8	96.6	97.3	97.2	97.7	97.6	97.3	96.8	96.5	96.0	95.7		
30	91.7	92.7	94.0	95.5	97.1	98.6	100	101	102	102	102	102	102	101	100	99.5	98.9		
35	94.4	95.6	97.4	99.2	101	103	105	106	107	108	108	107	107	106	104	103	103		
40	97.4	98.9	101	103	106	108	110	112	113	114	114	113	112	111	109	108	107		
45	101	102	105	108	111	114	116	118	120	120	120	119	118	116	114	112	111		
50	104	106	109	113	116	120	123	125	127	127	127	126	124	122	119	117	116		
55	108	111	114	118	122	126	129	132	134	134	134	132	130	127	125	122	121		
60	112	115	118	122	127	131	135	138	140	141	141	139	136	133	130	127	125		
65	116	118	122	127	132	137	141	144	147	147	147	144	141	138	135	132	130		
70	119	122	126	131	136	141	146	150	152	152	152	149	146	142	139	136	134		
75	122	125	129	134	139	145	150	154	156	157	156	153	150	146	142	139	137		
80	124	127	131	136	142	148	153	157	159	160	159	156	153	149	145	142	139		
85	125	128	133	138	144	150	155	159	162	162	161	158	155	151	147	143	141		
90	126	129	133	139	144	150	156	160	162	163	162	159	156	152	148	144	142		
95	126	129	133	139	144	150	155	160	162	163	162	159	156	152	148	144	142		
100	126	129	133	138	143	149	154	158	161	161	160	158	154	150	147	143	141		
105	125	127	131	136	141	147	152	156	158	159	158	155	152	148	144	142	140		
110	122	125	128	133	138	143	148	152	154	155	154	152	148	145	142	139	137		
115	120	122	125	129	134	139	143	147	149	150	149	147	144	141	138	135	134		
120	116	118	121	125	129	134	138	141	143	144	143	141	139	136	133	131	130		
125	112	114	116	120	124	128	132	135	136	137	136	135	133	130	128	126	125		
130	107	109	111	114	118	121	124	127	129	129	129	127	126	124	122	120	119		
135	102	103	105	107	110	114	116	119	120	120	120	119	117	116	114	113	113		
140	95.8	96.6	98.1	100	103	105	108	110	111	111	111	110	109	108	107	106	106		
145	89.4	90.1	91.3	93.2	95.0	97.1	98.9	100	101	102	102	101	101	100.0	99.3	99.0	98.9		
150	82.2	82.6	83.4	84.8	86.1	87.7	88.9	90.1	90.7	91.3	91.1	90.9	90.4	90.2	89.7	89.7	89.7		
155	71.3	71.5	71.8	72.8	73.8	75.1	76.0	77.0	77.4	77.7	77.4	77.4	76.9	76.8	76.4	76.5	75.6		
160	56.6	56.6	56.7	57.6	58.2	59.6	60.3	61.3	61.5	61.8	61.4	61.1	60.2	59.8	59.2	58.8	55.7		
165	38.2	38.0	37.6	37.9	38.0	39.2	39.6	40.3	39.9	40.1	39.4	39.0	37.9	37.5	36.5	34.9	31.8		
170	16.7	16.6	16.2	16.5	16.5	17.0	16.7	16.9	16.2	15.5	14.6	14.2	13.3	12.8	12.2	12.0	11.2		
175	1.26	1.23	1.21	1.16	1.20	1.15	1.19	1.15	1.18	1.14	1.18	1.14	1.17	1.14	1.17	1.14	1.16		
180	1.15	1.14	1.15	1.15	1.15	1.15	1.15	1.15	1.14	1.14	1.14	1.14	1.14	1.14	1.14	1.14	1.14		

C Range: 0 - 360DEG

C Interval: 10.0DEG

Test Speed: HIGH

Temperature:25.3°C

Operators:

Test Date:20 October 2022

γ Range: 0 - 180DEG

γ Interval: 2.5DEG

Test System:EVERFINE GO-2000A_V1 SYSTEM V2.00.456

Humidity:65.0%

Test Distance:6.265m [K=1.0000]

Remarks: